



# Relics of WWII Camp Columbia at Pooh Corner Bushland Reserve

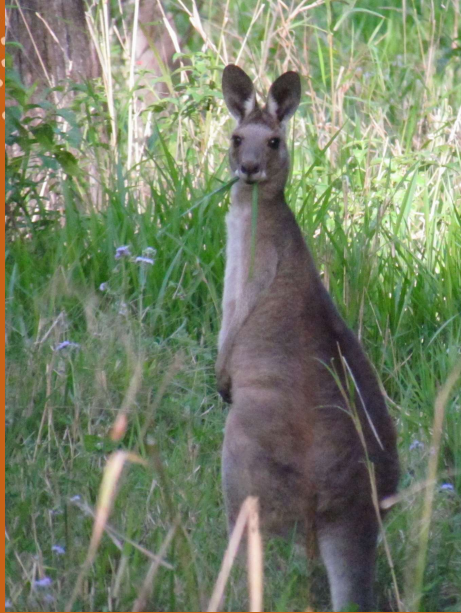
Ed Parker

Coordinator - Pooh Corner Environment Centre (PCEC)

for

**Information session held at PCEC**

**19 May 2022**



# scope

## Pooh Corner Bushland Reserve

- Current status
- How it came into being in 2005
- Post-war history 1950s to 2005
- Present status and its natural values
- Relevance for prior WWII history

## WWII history – Camp Columbia

- Mapping overview – US Army Block Plan
- Overlay mapping comparison with current-day land use

## Relics within Pooh Corner Bushland Reserve



## Pooh Corner Bushland Reserve

- **Natural area reserve** owned and managed by **BCC**
- **Nature refuge** under the Nature Conservation Act 1992 (Qld) - to conserve significant cultural and natural values
- Under vegetation management legislation, classified as as an **endangered regional ecosystem** RE 12.3.3
- Home to over **100 plant** species, **127 bird** species, and Brisbane's largest urban population of **eastern grey kangaroo**. Other macropods are **rednecked wallaby** and **swamp wallaby**.



# Birds of Pooh Corner – 127 species recorded



Double-barred Finch



Crested Pigeon



Galah



Brown Quail



Rainbow Lorikeet



Australian King-Parrot



Sacred Kingfisher



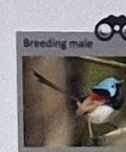
Rainbow Bee-eater



Breeding male Red-backed Fairy-wren



Breeding male Superb Fairy-wren



Breeding male Variegated Fairy-wren



Lewin's Honeyeater



Scarlet Honeyeater



Red-browed Finch



Peaceful Dove



Sulphur-crested Cockatoo



Scaly-breasted Lorikeet



Pale-headed Rosella



White-necked Heron



Dollarbird



Willie Wagtail



Grey Fantail



Welcome Swallow



Noisy Miner



Noisy Friarbird

## Birds of Pooh Corner

The ones we're most likely to see.



Binoculars may be needed



Pied Currawong



Australian Magpie



Grey Butcherbird



Pacific Baza



Great Egret



Spangled Drongo



Black-faced Cuckoo-shrike



Striated Pardalote



Silvereye



Golden Whistler

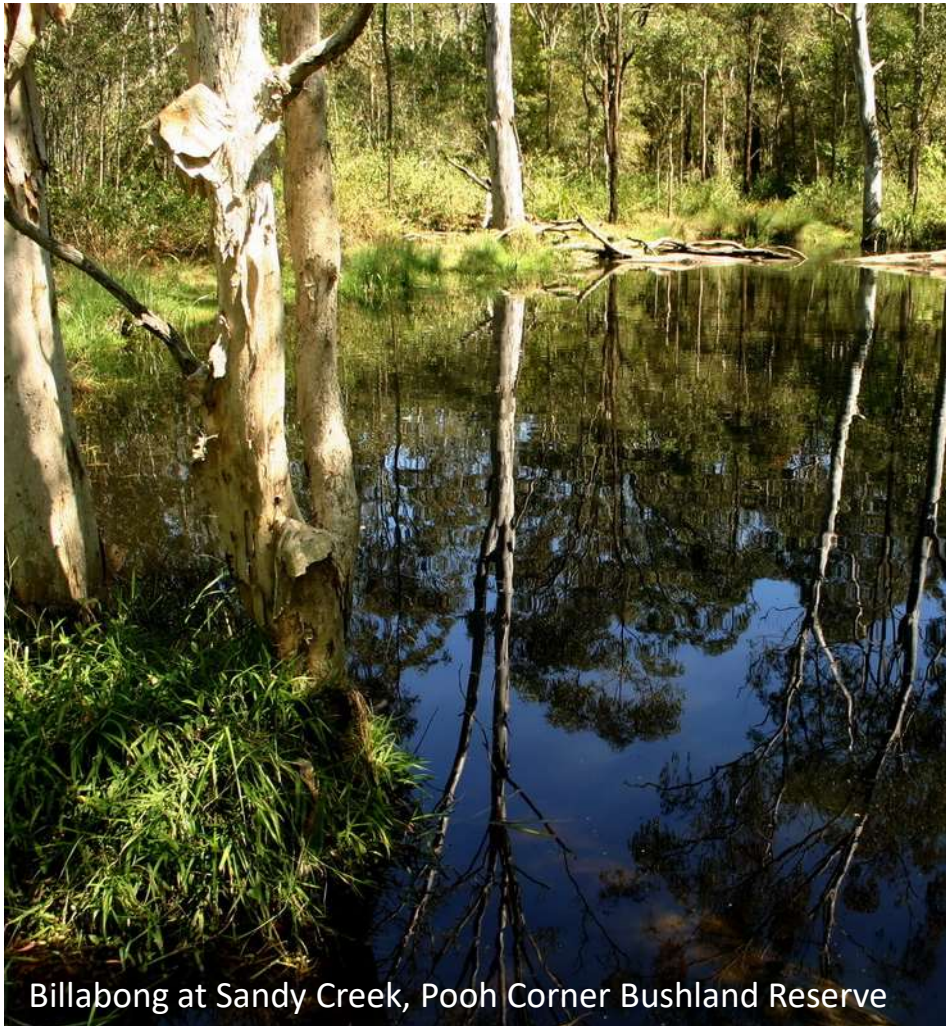


Rufous Whistler



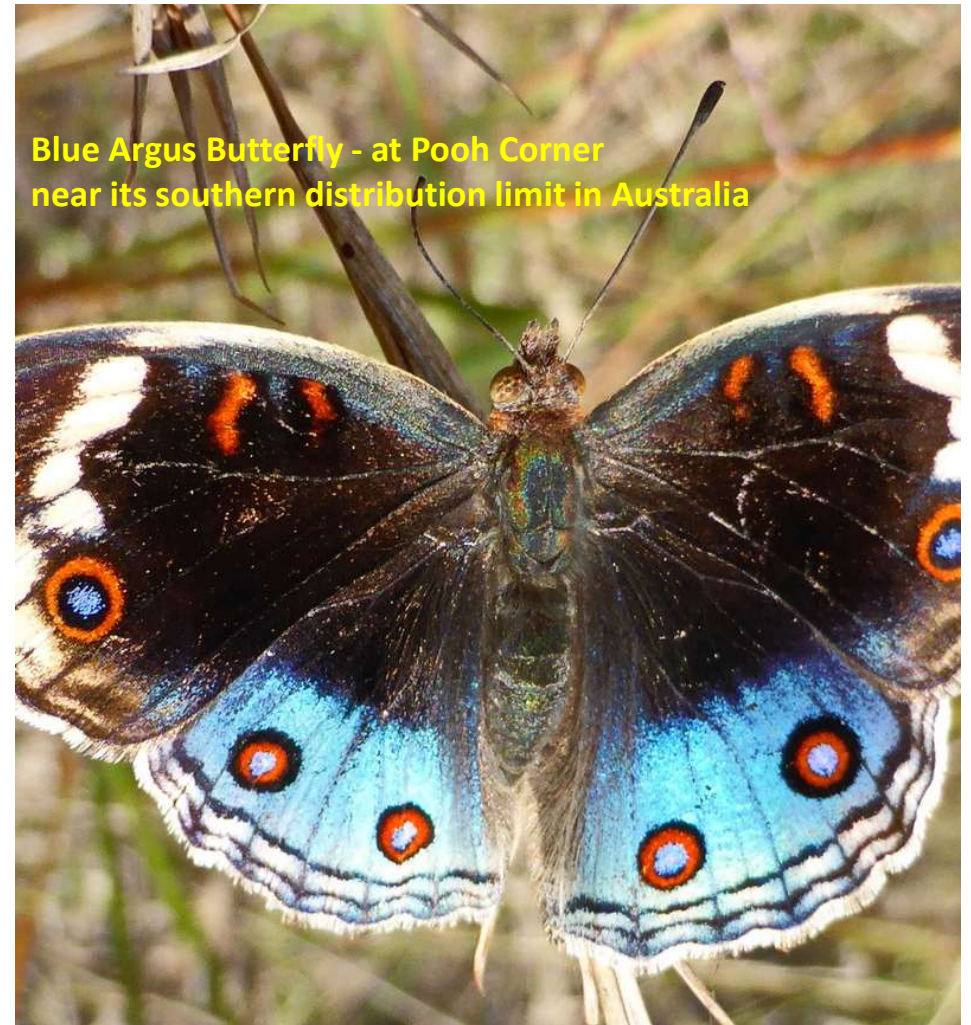
White-throated Honeyeater





Billabong at Sandy Creek, Pooh Corner Bushland Reserve

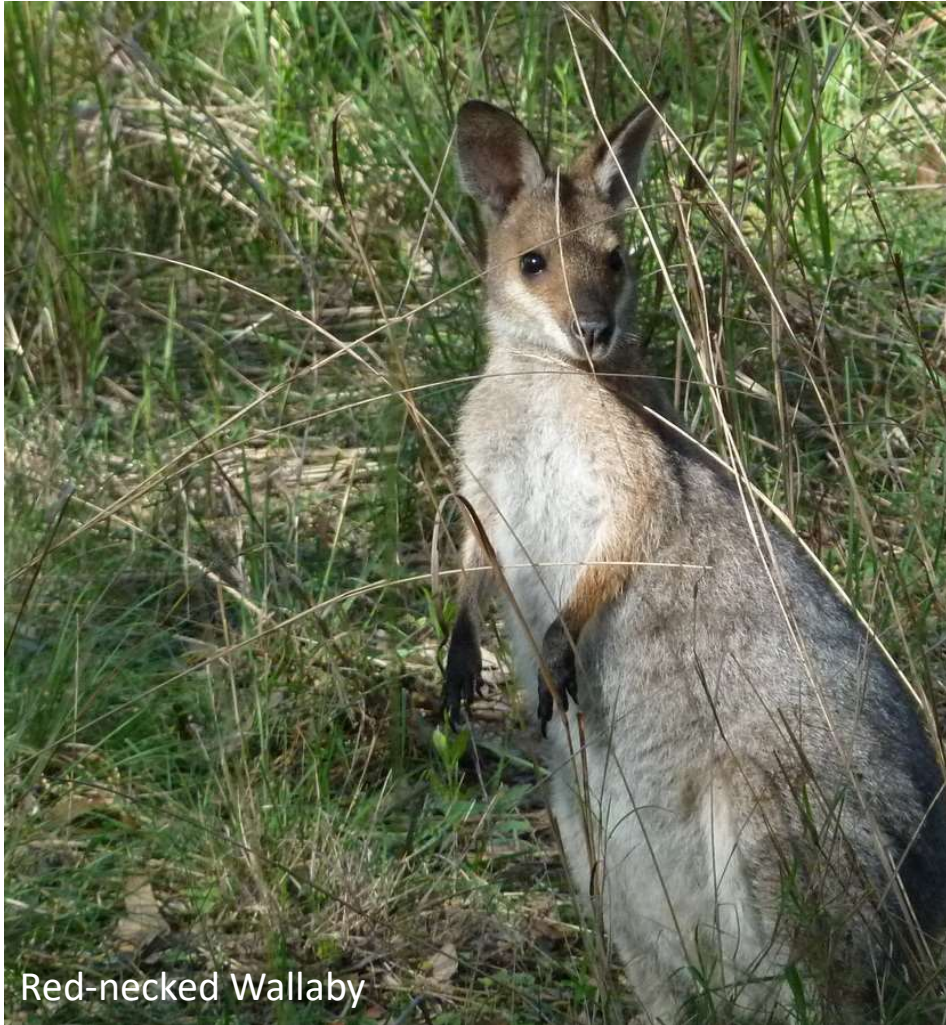
Photo: EP Oct 2010



Blue Argus Butterfly - at Pooh Corner  
near its southern distribution limit in Australia

Photo: EP May 2015





Red-necked Wallaby

Photo: Glenda Parker Oct 2010

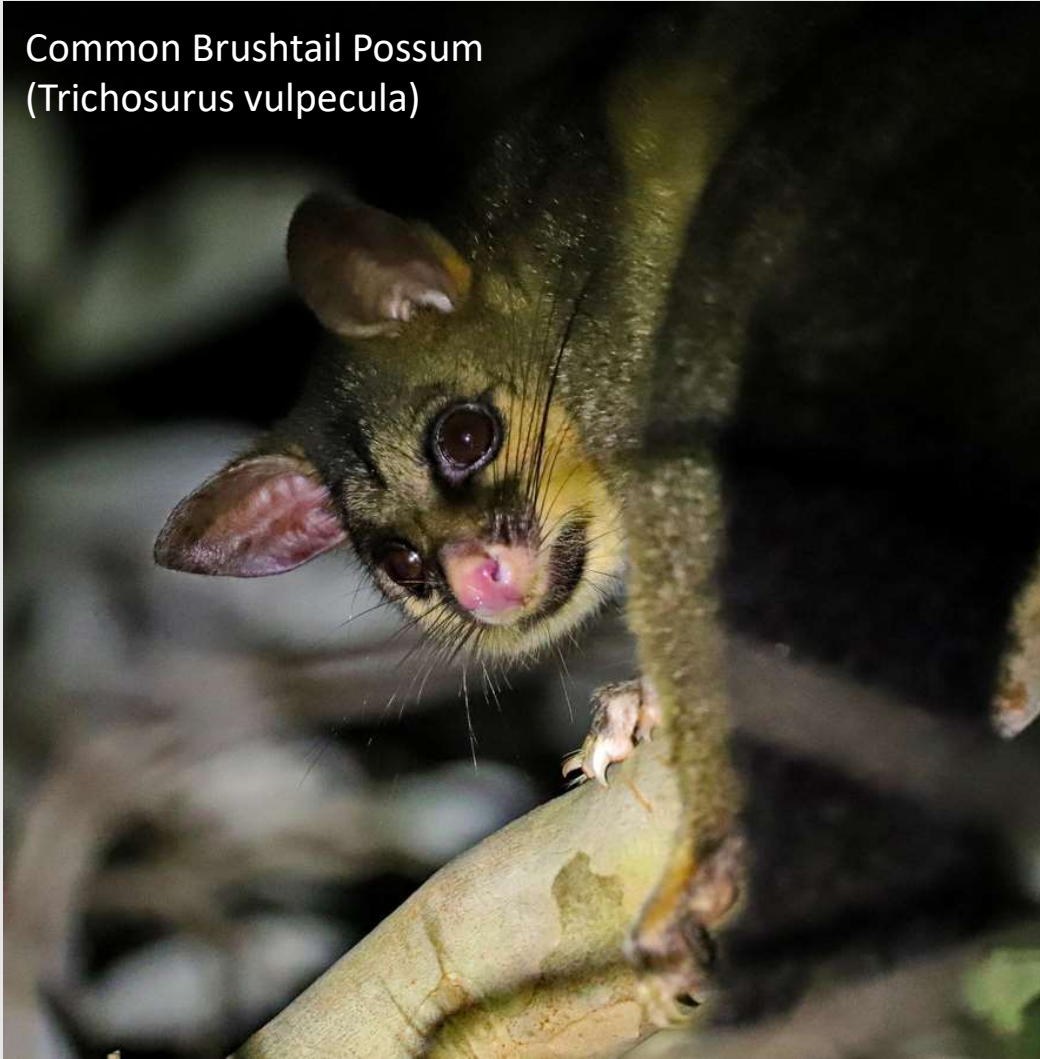


Badge Huntsman Spider  
(*Neosparassus* sp)

Photo: EP May 2022



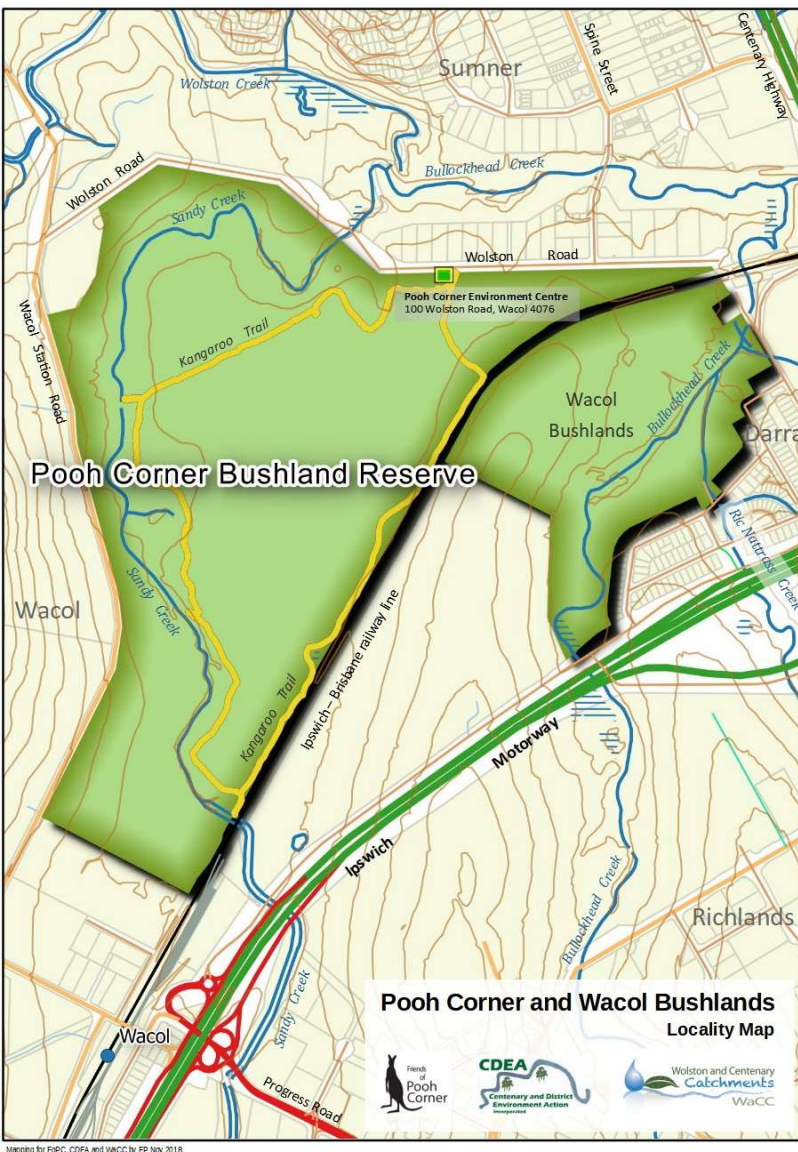
Common Brushtail Possum  
(*Trichosurus vulpecula*)



Photos: EP May 2015



Squirrel Glider  
(*Petaurus norfolcensis*)



## How the reserve came into being – in 2005

- A former Defence training ground, the bushland was saved for the people of Brisbane in April 2005
- Result of a short but intense community campaign
- Led by **Friends of Pooh Corner (FoPC)** and supported **Centenary and District Environment Action (CDEA)**
- Initiated when Defence advertised the site for sale for development in Feb 2005
- Defence withdrew site from sale, and ‘sold’ to BCC for peppercorn \$1





## Community campaign – Mar-Apr 2005

- Led by **Friends of Pooh Corner (FoPC)** and supported **Centenary and District Environment Action (CDEA)**
- Initiated when Defence advertised the site for sale for industrial development in Feb 2005
- By April 2005, Defence withdrew site from sale, and 'sold' to BCC for peppercorn value of \$1

Remnants from 1950s Defence training  
area at Pooh Corner Bushland Reserve



Photo: EP April 2005

## Post-war history 1950s to 2005

- Early 1950s – this land came into ownership of Defence
- Training area for National Servicemen during the Korean War which lasted until 1953
- Remained in Defence ownership for over 5 decades until transferred to BCC after the 2005 community campaign
- In the intervening 50 years, the bushland was a haven for wildlife, becoming more valuable as preserved habitat while the surrounding land was progressively developed
- The bushland, though intact, suffered misuse: rubbish dumping and illegal off-road vehicle use



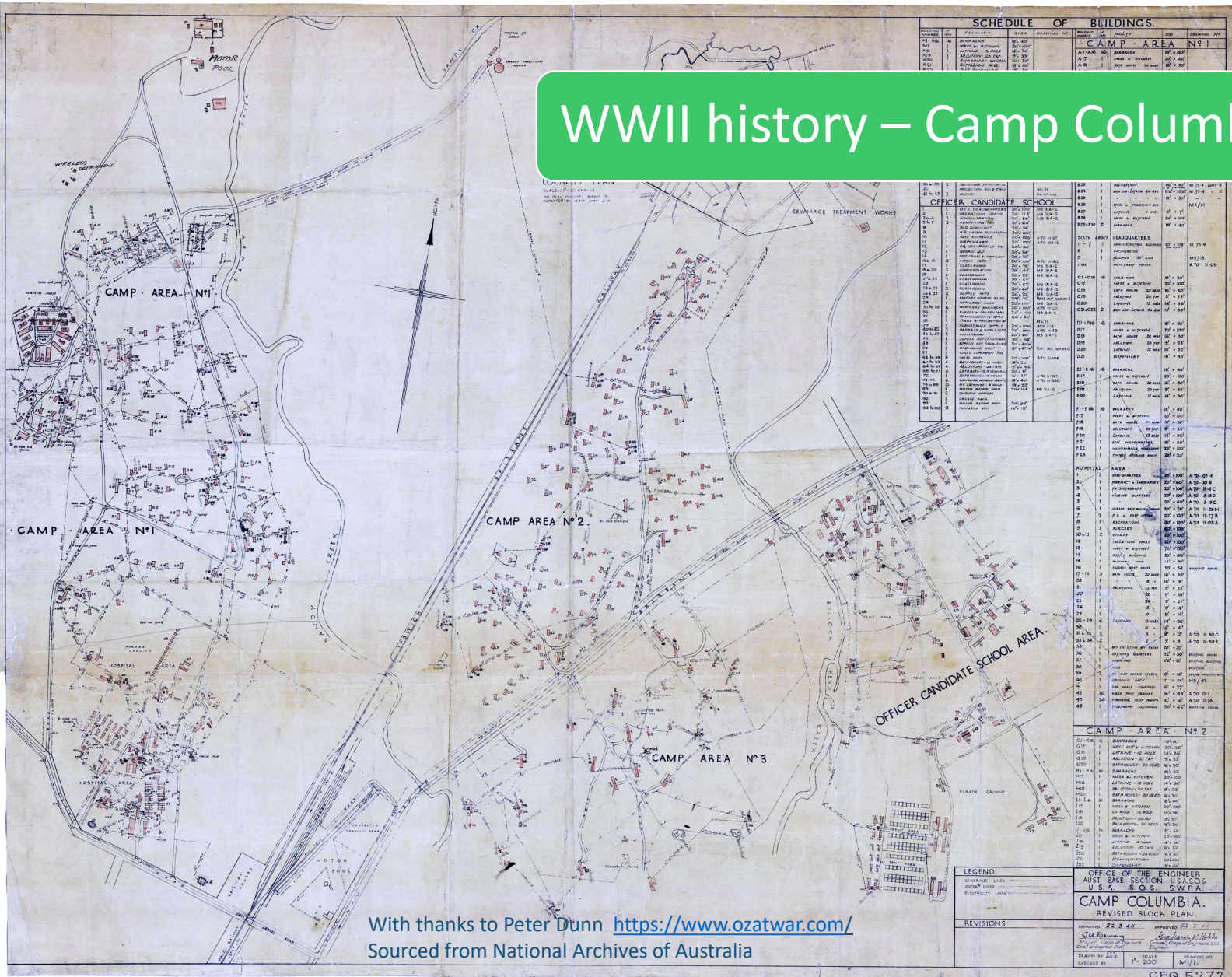
## Pooh Corner and prior WWII history

- The US Army WWII Camp Columbia covered extensive tracts of the surrounding land
- Camp Columbia did encroach onto the land that became the Pooh Corner Bushland Reserve, but only minimally so
- In the post-war years, much of Camp Columbia's facilities were demolished for institutional uses, ie. prisons
- When Pooh Corner was saved for environmental purposes in 2005, it fortuitously preserved relics of Camp Columbia where it overlapped with the bushland





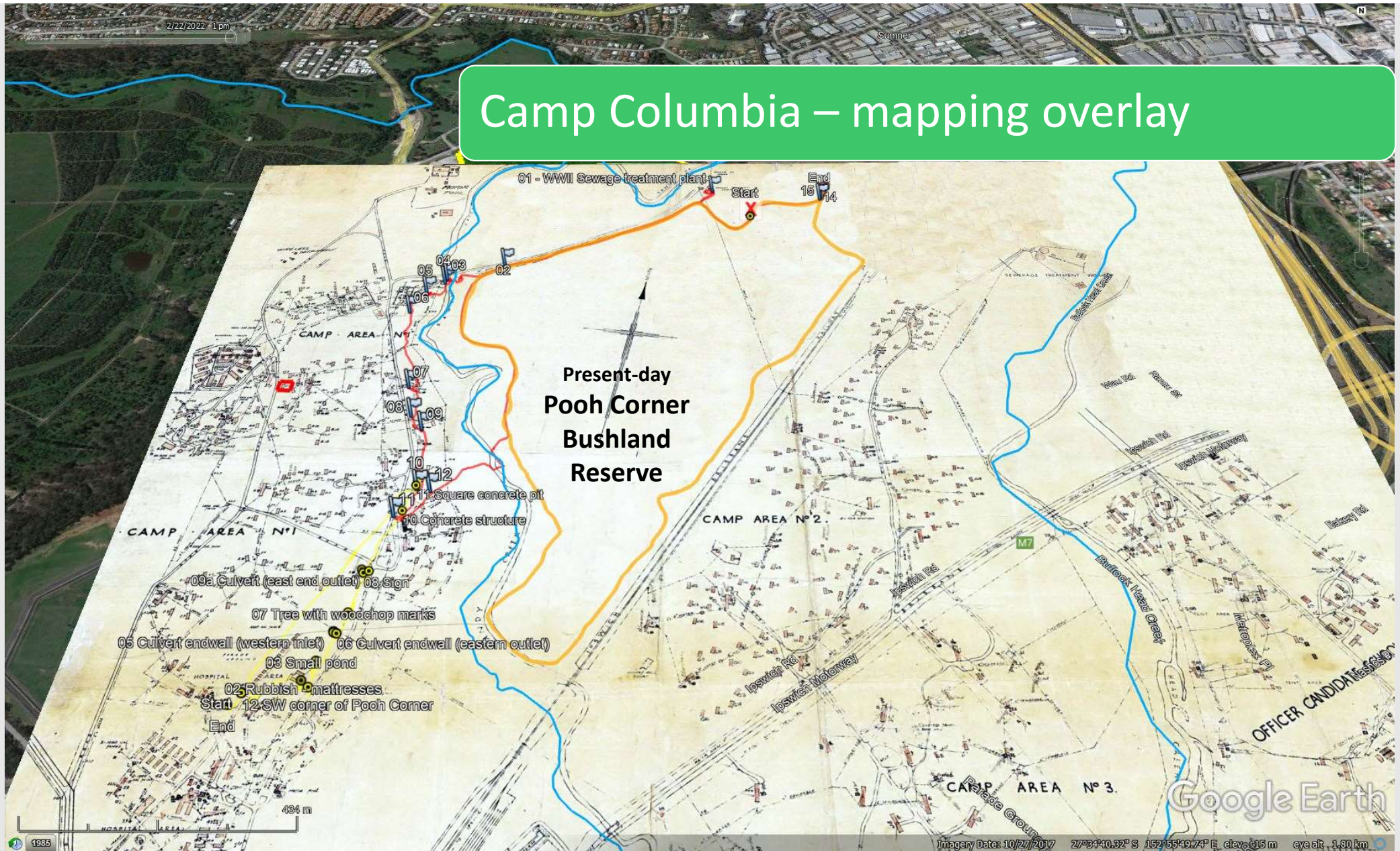
# WWII history – Camp Columbia



With thanks to Peter Dunn <https://www.ozatwar.com/>  
Sourced from National Archives of Australia



## Camp Columbia – mapping overlay













# Camp Columbia – exploration



Tank drawn on map

Tank on Google satmap  
shows up as similar diameter

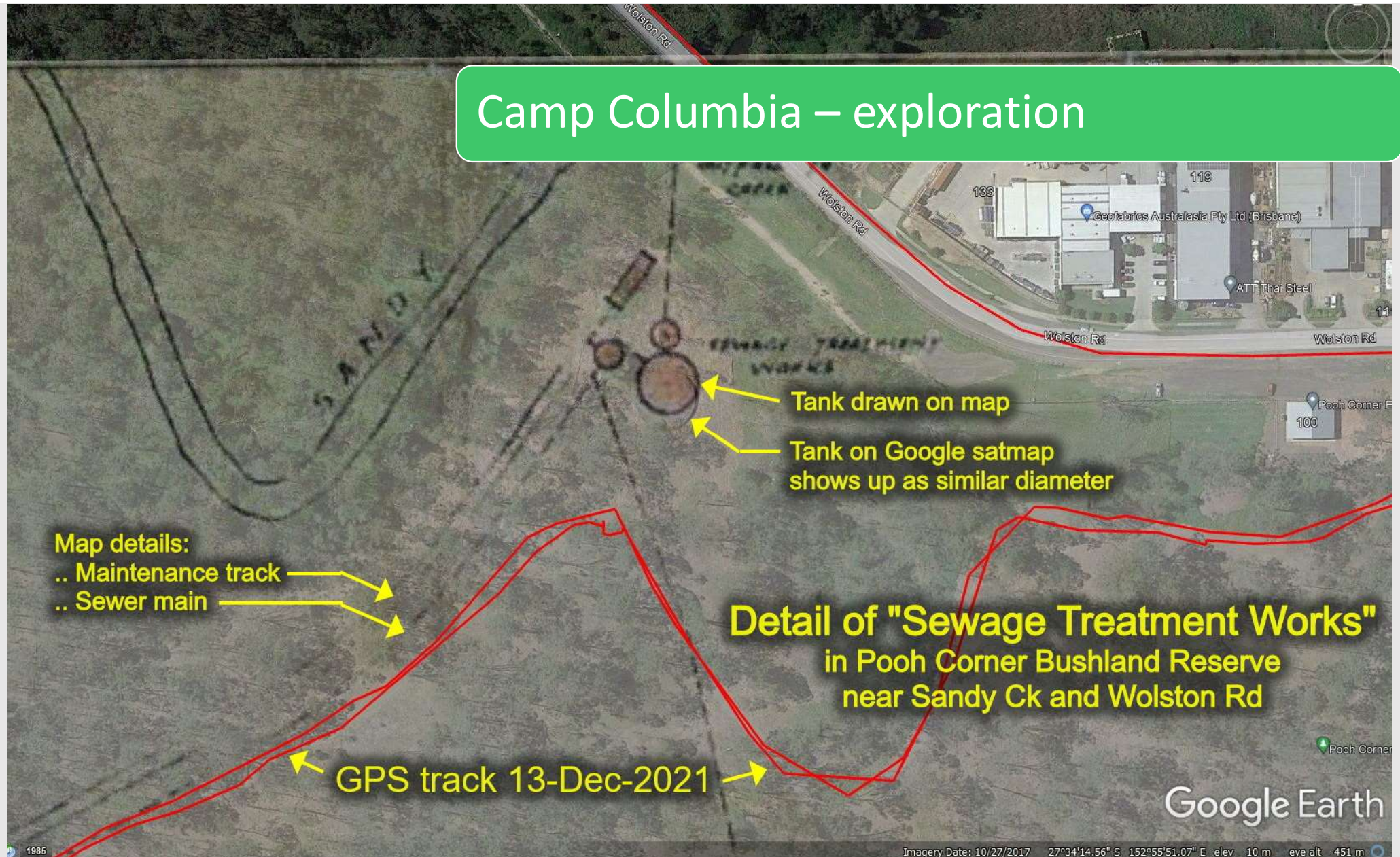
**Detail of "Sewage Treatment Works"**  
in Pooh Corner Bushland Reserve  
near Sandy Ck and Wolston Rd

Google Earth

Imagery Date: 10/27/2017 27°34'14.56" S 152°55'51.07" E elev 10 m eye alt 451 m



## Camp Columbia – exploration





## Camp Columbia – exploration

WWII Sewage Treatment Plant remnants  
at Pooh Corner Bushland Reserve  
near Sandy Creek and Wolston Road, Wacol

Photo: EP Feb 2022



A photograph of a bushland reserve. In the center, there is a concrete structure with a semi-circular opening, which is the end wall of a road drainage culvert. A large, rusty metal pipe lies horizontally across the foreground, partially obscuring the concrete structure. The ground is covered with dry leaves and green grass. Several trees are visible in the background.

## Relics within Pooh Corner Bushland Reserve

End wall for road drainage culvert, and water main



A close-up photograph of a person's hand holding a large, heavily rusted metal pipe. The hand is positioned on the left side of the frame, with the thumb and fingers gripping the pipe. The pipe is dark brown and black with significant rust and corrosion. The background shows a natural, bushy environment with green grass and brown leaves. A blue text box is overlaid on the upper right portion of the image.

## Relics within Pooh Corner Bushland Reserve

Water main remnant



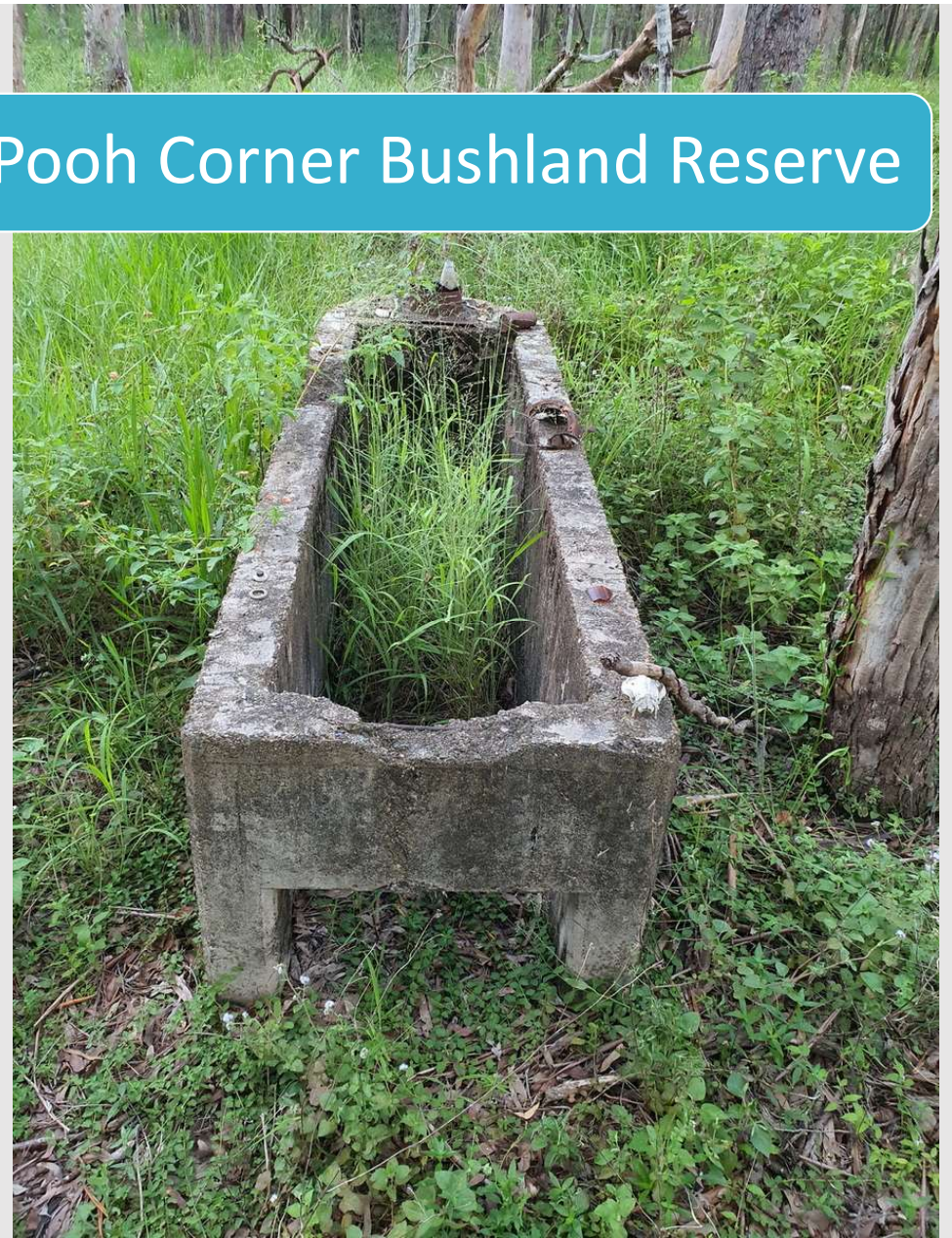


## Relics within Pooh Corner Bushland Reserve

Fire pit?

(Purpose yet to be determined)

Wacol Station Road visible in background





## Relics within Pooh Corner Bushland Reserve

**Concrete bridge abutment** at Sandy Creek  
(at western side of Pooh Corner)  
for WWII maintenance track to sewage treatment plant  
located at eastern side of Pooh Corner, near Wolston Road

Sandy Creek

Photo: EP Feb 2022



UQ archeology team members  
crossing Sandy Creek via log bridge

Feb 2022



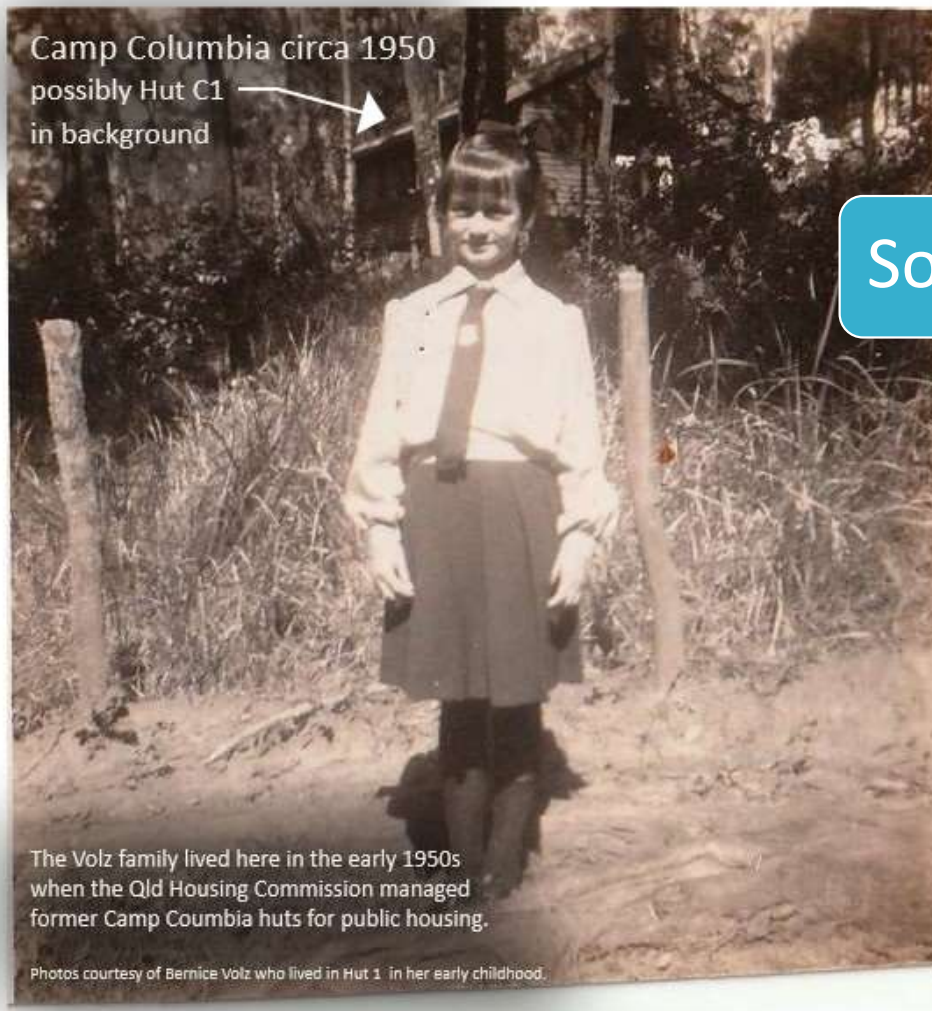
# Social History

Camp Columbia  
Hut C1



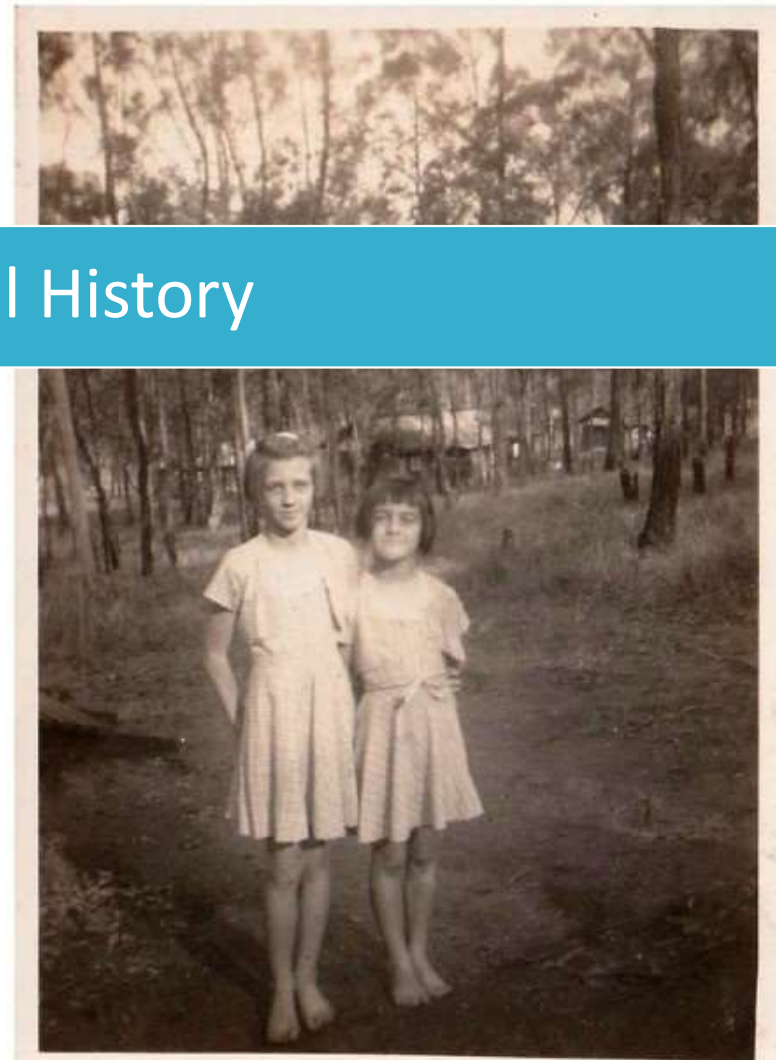


Wacol - Camp Columbia huts  
Photos from Bernice Volz



Bernice 8yrs 7mths old. This could be our hut in the background, land is steeper and maybe the west side of hut is the road.  
IMG\_20220118\_0001\_xel

## Social History



The photo of my sister and me (says on back Camp Columbia) is quite a ways from our hut, too low/flat? Of course I am the dark haired cheeky one, my 2 sisters and brother were blond.  
IMG\_20220118\_0002\_xel





## Centenary Archers clubrooms in nearby Wacol Station Road.

This building is one of the original huts from Camp Columbia, built at nearby Wacol by the US 6<sup>th</sup> Army during World War II. It was relocated to this location for ongoing use by this local community group.





Aerial oblique view of present-day Pooh Corner Bushland Reserve, showing the main locations of relics from the WWII Camp Columbia.



Thank you